



FXC
automation

The background of the slide is a photograph of an industrial welding process. A robotic arm is welding a metal component, with a welder's hand visible in the foreground, holding a tool. Bright sparks are flying from the welding point, and a blue-tinted background image of a person in a hard hat is visible on the left side.

10~~y~~ears

We are the right choice, a one stop source with **10+ years of process production engineering** with the most competitive prices and quality solutions for every single one of our clients.

Our Services



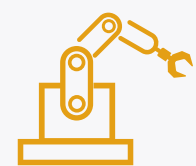
Industrial Structures



Safety Representative



Facilities



Machining



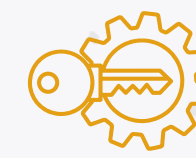
Equipment Installation



Specialist Support by Area



Special Equipment



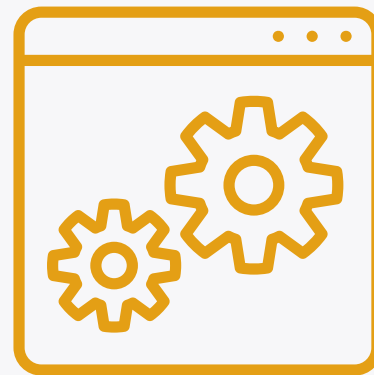
Turnkey Projects



Specialized Services

-  **Program Management**
-  **Electrical Install**
-  **Safety Representative**
(OSHA 30 Certified)
-  **Mechanical Install**
-  **Rigging**

Mechanical & Electrical Design



**Hardware
Selection**



**Software
Development**



3D CAD

Software Planning & Design



LabView



Roboguide



ePlan



AutoCAD

The title 'Machining Capabilities' is written in a large, white, sans-serif font. To the left of the word 'Machining' is a yellow graphic element consisting of two parallel diagonal lines forming a chevron shape.

Machining Capabilities

The background of the entire image is a close-up photograph of a CNC machining process. A metal cutting tool is shown in the process of cutting a piece of metal, with bright orange sparks flying out from the point of contact. The machine's structure is visible in the background, and the overall lighting is dim, highlighting the sparks and the tool.

**We have the best tools and
equipment on the market
for your needs.**

Chevalier FVM-3016DCL

Payload : 6,500 kg

Capacity: X/Y/Z

(mm): 3,100 x 1,600 x 780



Haas Mini Mill

7.5 hp

5.6 kw

6000 rpm

16 x 12 x 10"

406 x 305 x 254 mm

Titanium CK7130BP

Máx. turning diameter (mm): 350

Slide stroke X-axis (mm): 350

Paso de barra (mm): 36



Mitsubishi Wire EDM

15.7 x 11.8 x 8.7''

400 x 300 x 220 mm

Wire Diameter Possible: 0.004-0.012 mm

Minimum Start Hole Diameter: 0.02 mm

Haas VF-3

30 hp

22.4 kw

8100 rpm

40 x 20 x 25'

116 x 508 x 635 mm



Haas VF-2

30 hp

22.4 kw

8100 rpm

30 x 20 x 25'

762 x 508 x 635 mm

Our Facilities/



HERMOSILLO, SONORA

64,600 ft² (6,000 m²)
Land Main Ope

14,650 ft² (1,361 m²)
Assembly Area
Inspection and Quality

Controls & Robotics

- 6460 ft² Land
- Controls •Robotics •PLC
 - Software Planning and Design
 - Software programming

Full Machine Shop

- 6460 ft² Land
- Controls •Robotics •PLC
 - Software Planning and Design
 - Software programming

SALTILLO, COAHUILA

Office and special
equipment facility.

PUEBLA

Sales Office



Automatic Cells Products



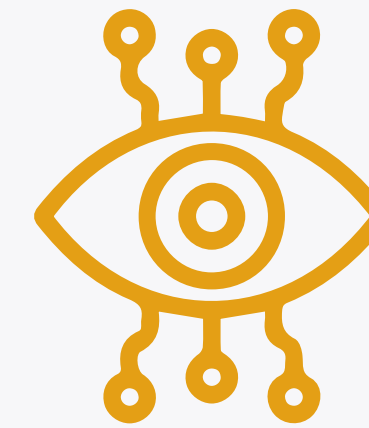
Integration Systems Portfolio



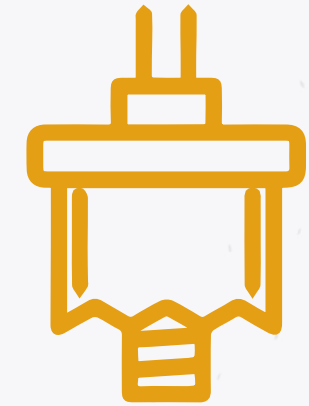
Spot Welding



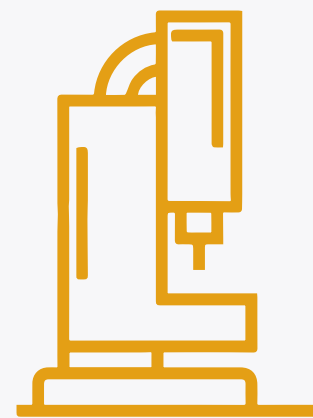
MIG Welding



Vision Systems



Bushing



**Clinching, Piercing
and Riveting**

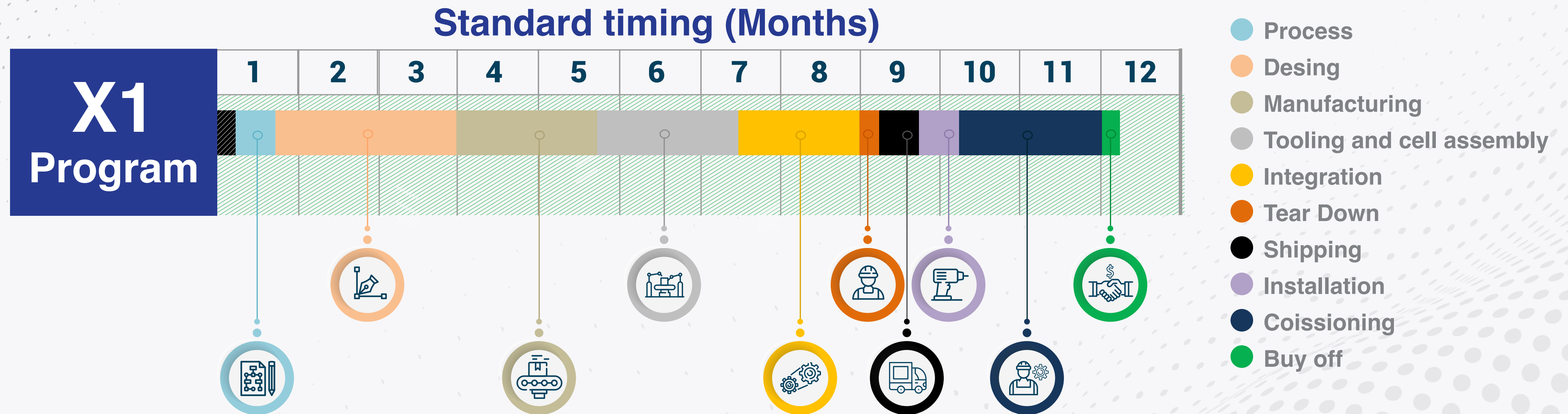


Adhesive Equipment



**Laser Cutting
and Engraving**

Project Process and Standard Timing



The background of the slide is a photograph of an industrial robot arm in a factory setting. The robot arm is blue and black, and it is currently welding a metal part. A large, bright orange and yellow spray of sparks is emanating from the welding point, creating a dramatic visual effect. The robot arm is positioned on the left side of the frame, and the sparks are spreading out towards the right.

Main Projects

**In the last 2 years we installed
more than 500 robots with
excellent performance and
improving the timing proposal.**

**Getting customer satisfaction
is our principal objective.**

Turnkey Project

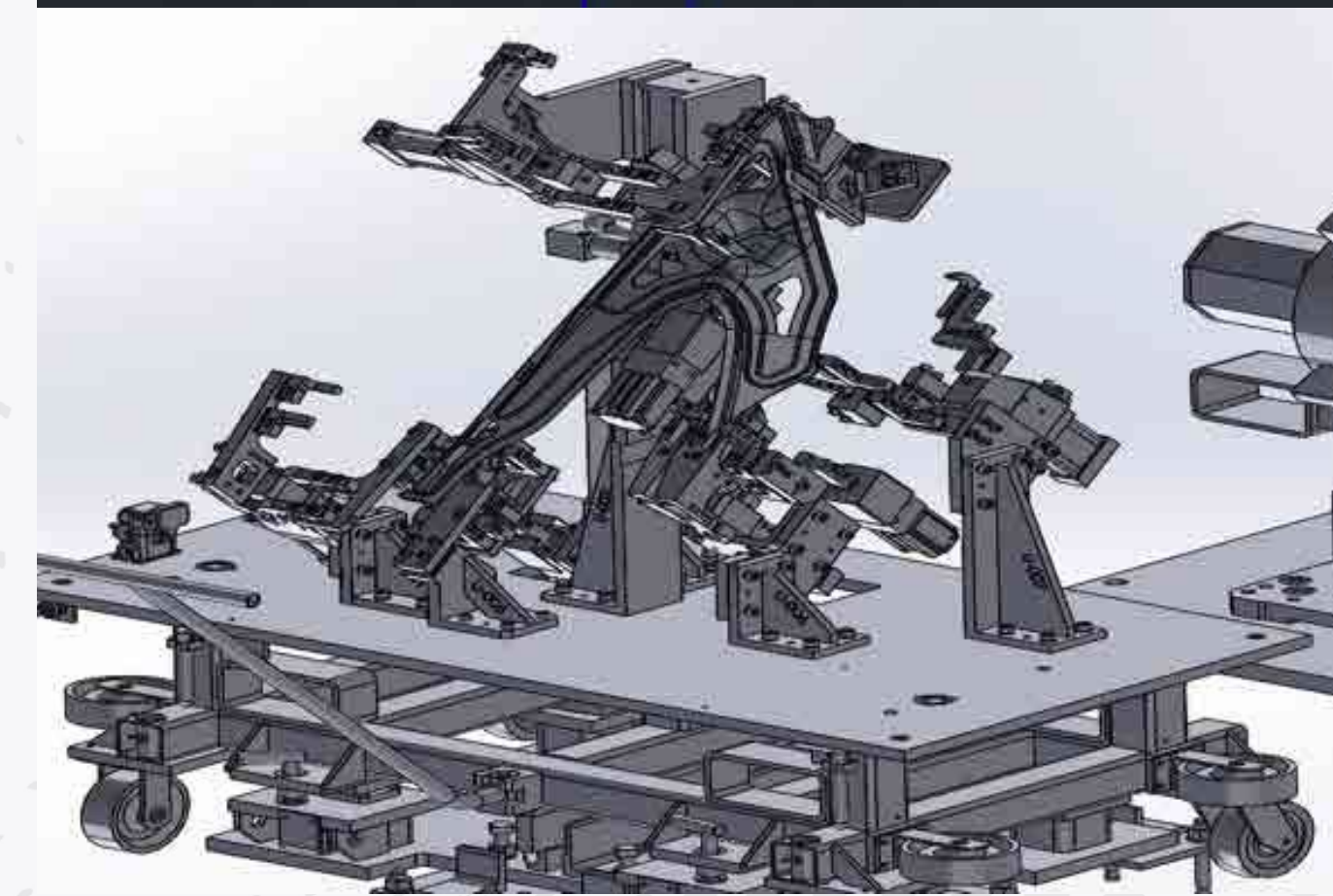
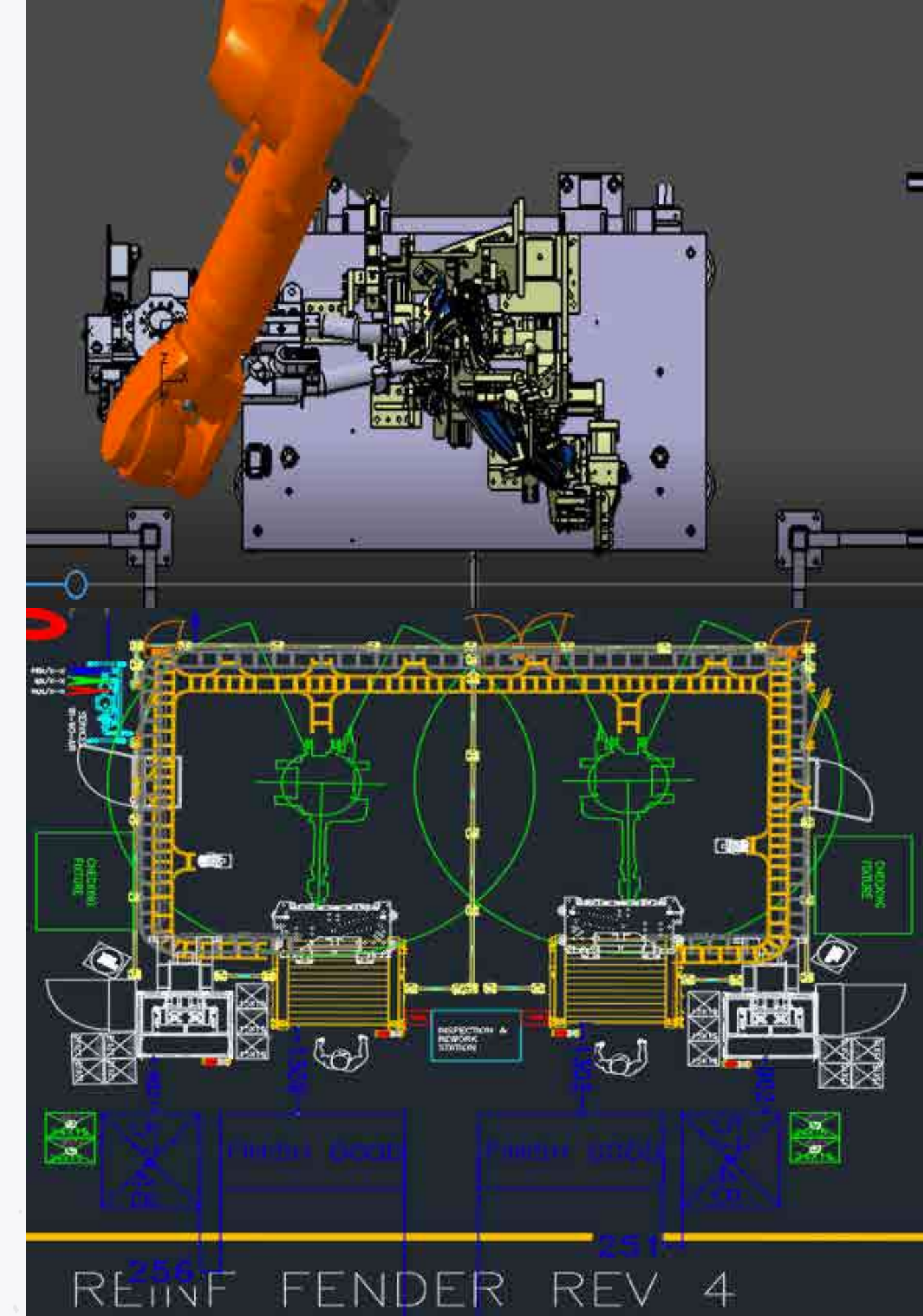
“EV” Fender assembly cell full integration

- 2x Robots
- Design & Process Simulation
- Build & Install
- PLC
- Robotics

Facility:
Magna SFT

City:
Hermosillo,
Sonora

Year:
2018



Install of complete Weld (Body) Shop including main feeds

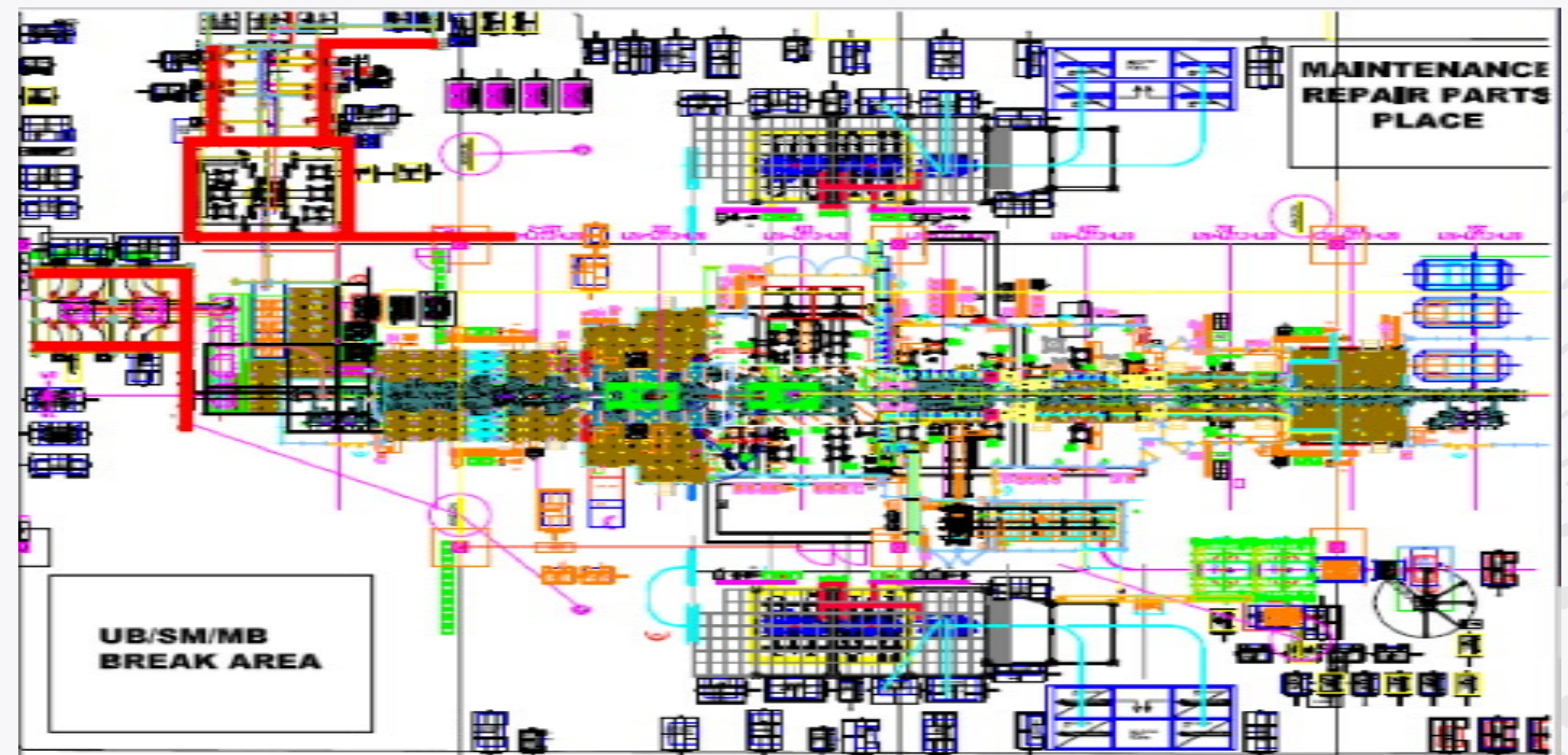
Full install weld shop at main body (52, 750 sq ft)

- 4x Mezzanine
- 40x Robots
- 18x WPP
- 22x CDP

Facility:
Toyota Manufacturing of Mexico

City:
Apaseo el Grande, Guanajuato

Year:
2018 – 2019 – 6 months (current)



Install of complete Weld (Body) Shop including main feeds

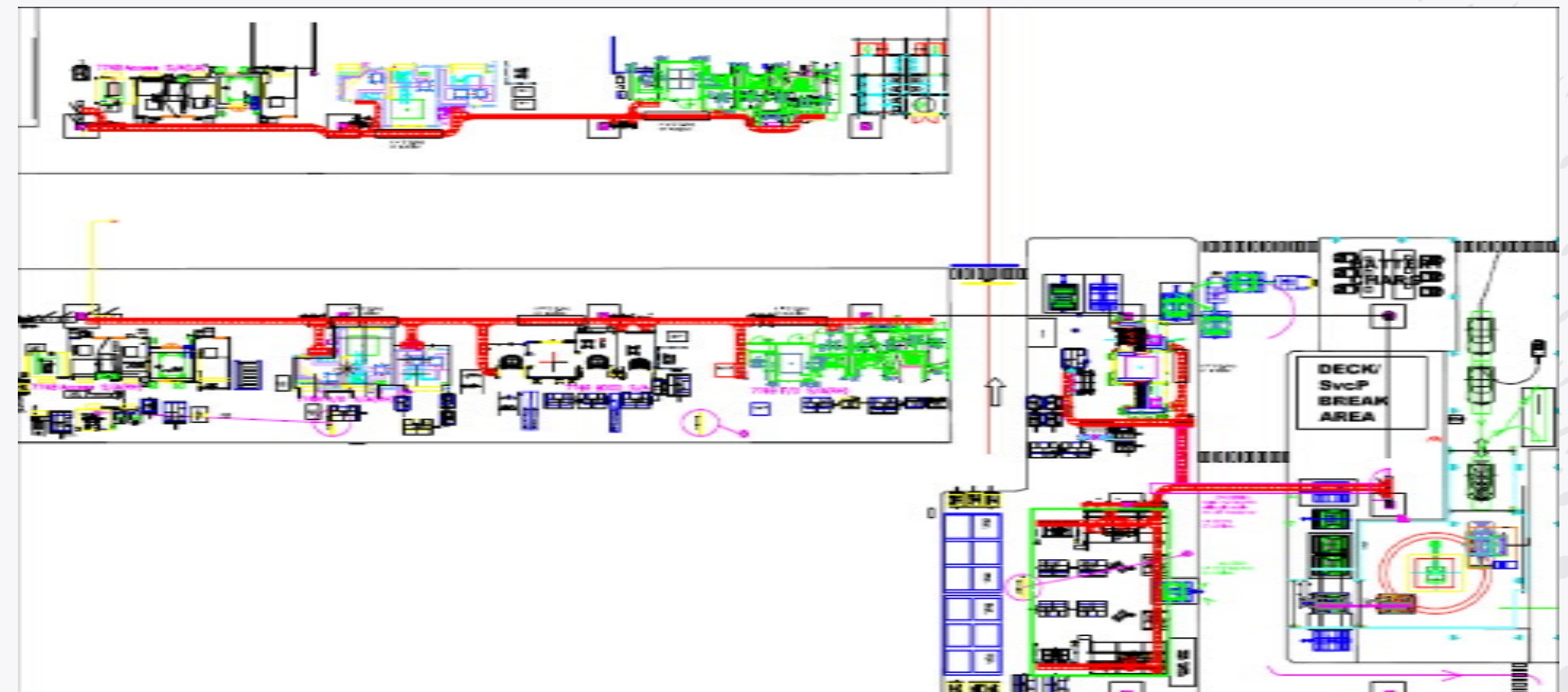
Full install weld shop at shell body (43,000 sq ft)

- 6x Hem Presses
- 24x Robots
- 12x WPP
- 15x CDP

Facility:
Toyota Manufacturing of Mexico

City:
Apaseo el Grande, Guanajuato

Year:
2018 – 2019 – 6 months (current)



Design & automation

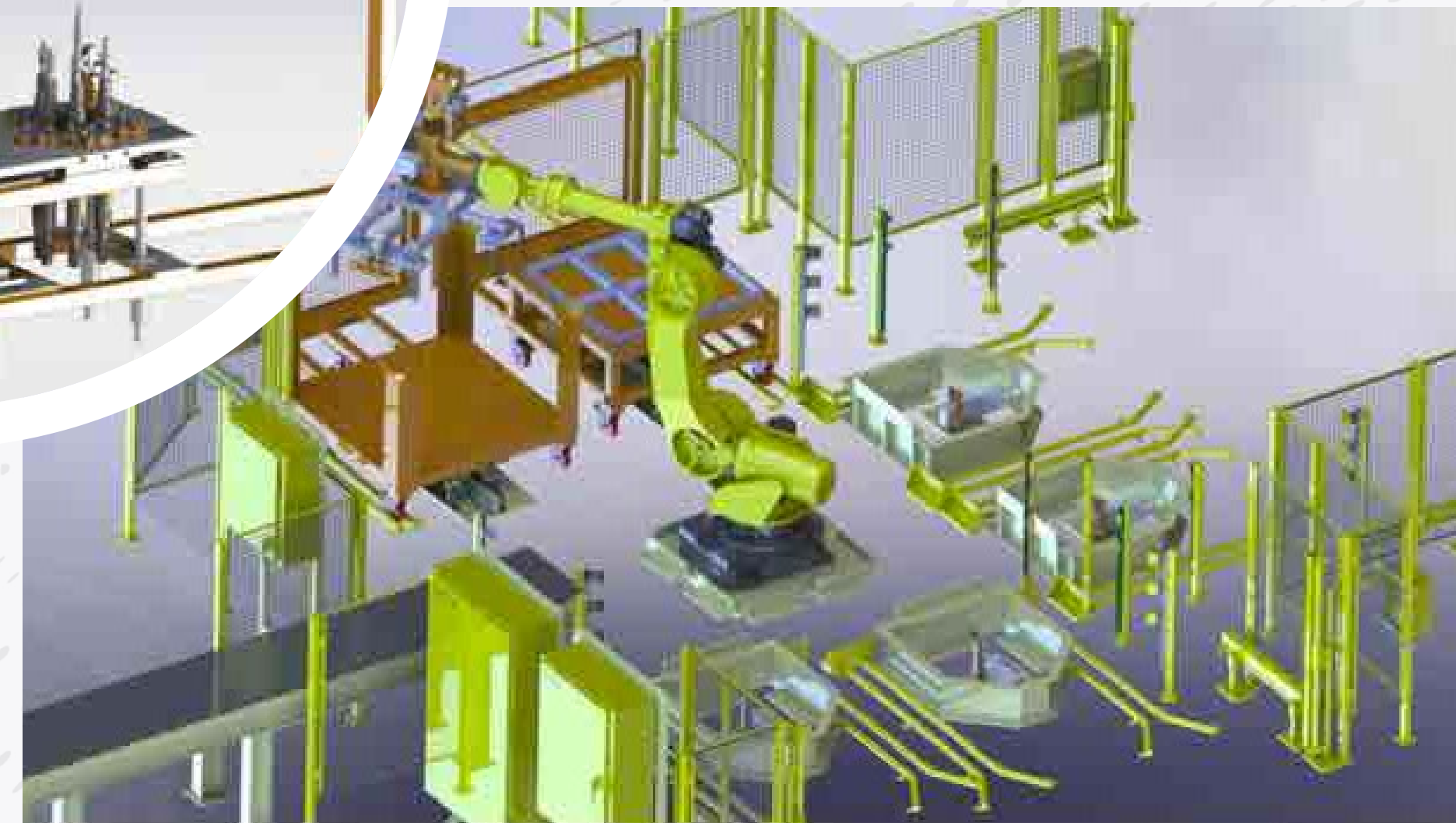
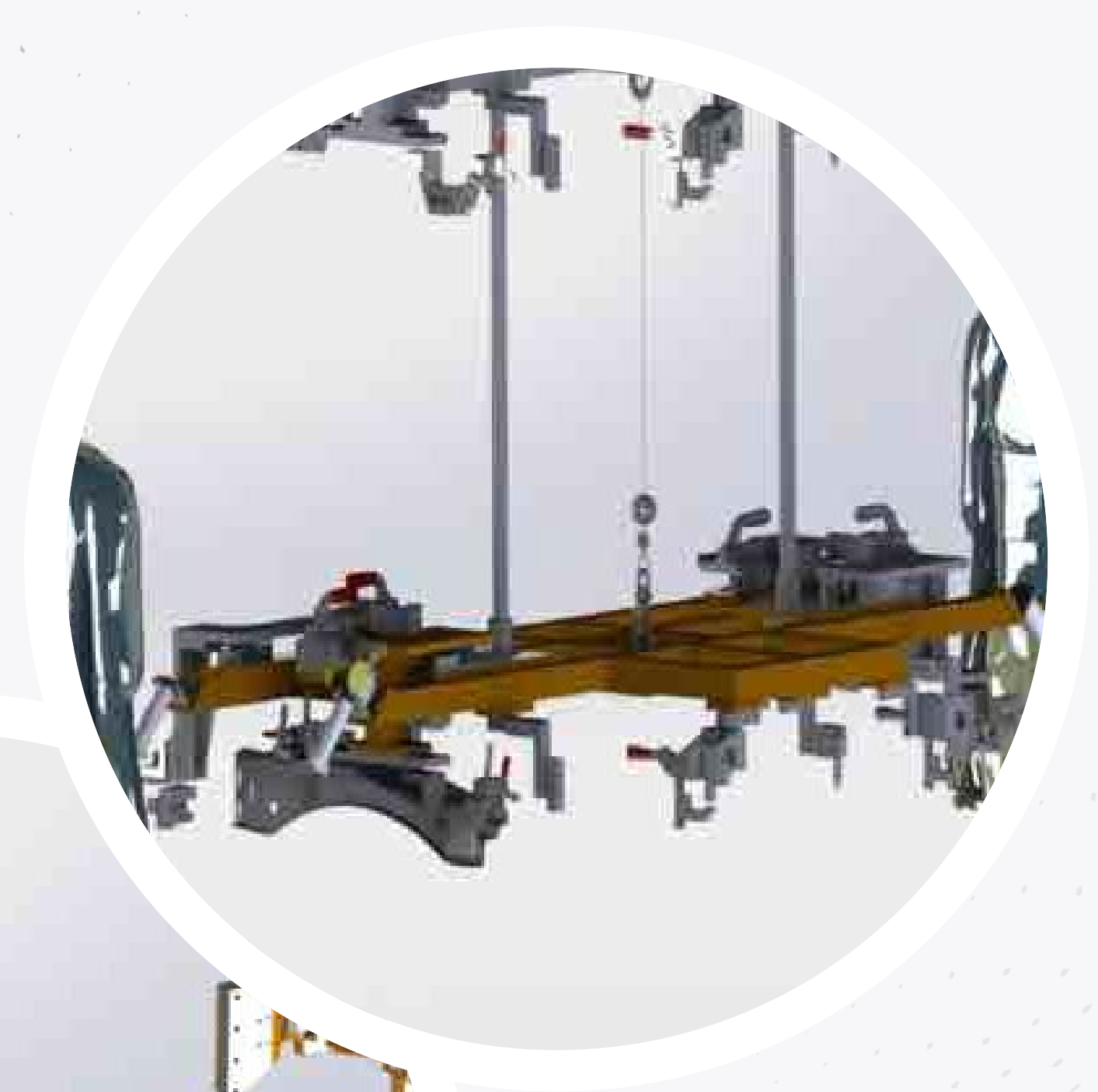
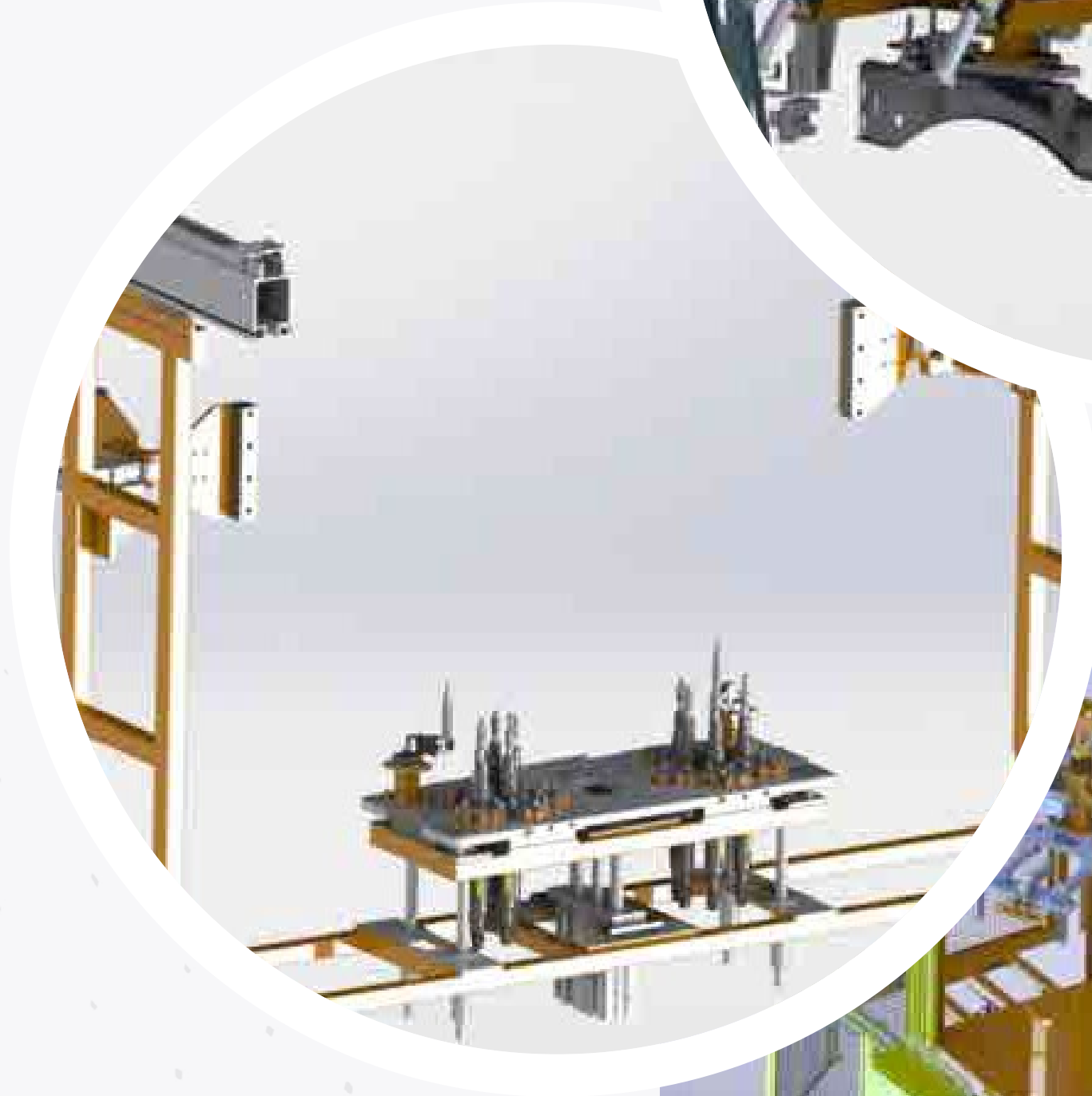
Ford Motor Company

Automatic Fixture to install Rear Suspension

Goal was to change from manual operation to be fully automated.

Battery load and Unload cell

Goal was to change from manual operation to be fully automated.



Why FX2?



Because we're the leaders on offering a complete solution to your project, working with creativity, flexibility, adaptability and skilled people.

Our Advantage



Expertise from drawing to integration.



Fast answer at your requirements.



Qualify and experience people to warranty the results.



Best solutions.



One stop shopping solution with 10+ years of process production engineering with a very competitive cost.



Extensive background for ergonomics tooling specialized on High Tech and low cost tooling solutions.

Our Clients





Sales Contact

Fernando Fuentes

+52 844 869 22 06

fernando.fuentes@fx2automation.com

Bld. Nazario Ortiz Garza # 2060

Fracc. Lagos Continental C.P. 25253

Torre Santa Isabel Oficina 903

Saltillo, Coahuila, México.

Thanks for your confident.